



THE SELWYN - UNIT 23

FEATURES, FINISHES, AND UPGRADES SHOWN

- Gas Fireplace with Pre-Cast Concrete Surround
- 7" Hardwood Flooring in Wilderness
- Bedford Style Cabinetry in Kitchen in Alpine White
- Perimeter Glass Cabinets to Ceiling in Kitchen
- Calacatta Golde Suede Quartz Countertops in Kitchen with Waterfall Island
- Kitchen Backsplash in Bourbon St Masonry 3"x 10"
- Bedford Style Cabinetry in Alpine White in Primary Bathroom
- Calacatta Flutter Quartz Countertops in Primary Bathroom
- Primary Bathroom Shower Wall Tile in White Koshi 12"x 24"
- Primary Bathroom Floor Tile in Dali MTW Artista 8"x 8"
- Primary Bathroom Wet Bed Tile in Silver Tweed
- Bedford Style Cabinetry in Alpine White in Secondary Bathrooms
- Calacatta Flutter Quartz Countertops in Secondary Bathrooms
- Secondary Bathroom Shower Wall Tile in White Koshi 12"x 24"
- Secondary Bathroom Floor Tile in White Koshi 12"x 24"
- First Floor Bathroom Tile Wet Bed in White & Gray US Ceramics Basketweave
- Park Satin Nickel Cabinet Hardware
- Stainless Plumbing, Bathroom, and Shower Door Finishes
- Satin Nickel Door Hardware
- Crown Molding on 1st Floor Foyer and Bedroom, Main Living Level, Bedroom Level
- Bedford Style Cabinetry in Alpine White in Laundry
- Bedford Style Built-in Cabinets in Alpine White in 1st Floor Bedroom and Living Room
- Electric Car 220V Outlet in Garage
- ecobee Smart Thermostats
- Bosch French Door Refrigerator

Specifications, materials, and availability of homes or communities are subject to change without notice or obligation. Please contact us to verify current information. They may differ from completed improvements and may change without notice.

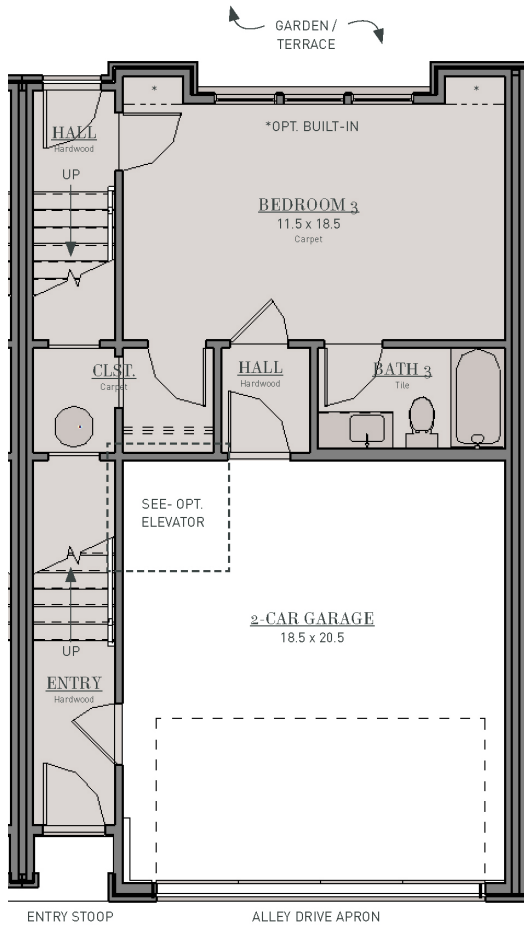




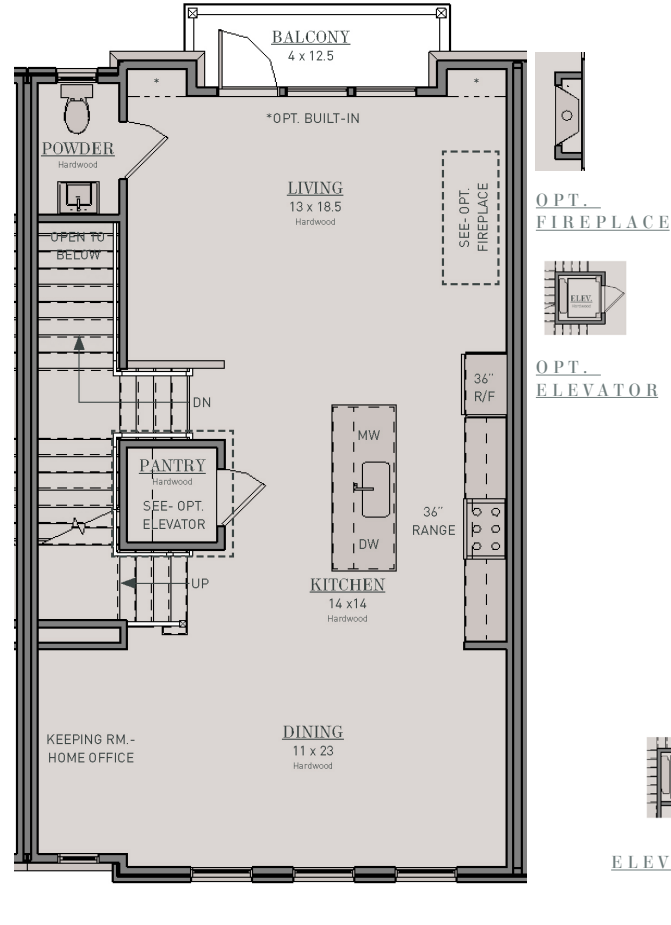
THE SELWYN

3 Bedrooms + 3.5 Bathrooms

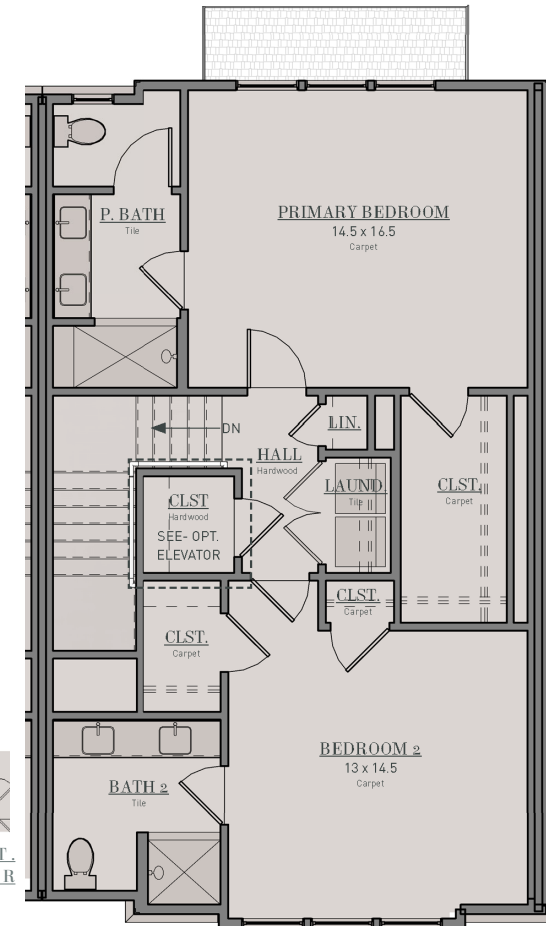
2,394 square feet



FIRST FLOOR



MAIN LEVEL



THIRD FLOOR

Figures reflecting size, square footage, and other dimensions are estimates; actual construction may vary. Size/square footage and price of your home may vary based on options selected. Floor plans may vary according to elevation. Prices, plans, dimensions, features, specifications, materials, and availability of homes or communities are subject to change without notice or obligation. Please contact us to verify current information. They may differ from completed improvements and may change without notice.