



THE STEPHENS - UNIT 19

FEATURES, FINISHES, AND UPGRADES SHOWN

- Gas Fireplace with Pre-Cast Concrete Surround
- Gourmet Kitchen Layout
- 5" Hardwood Flooring in Honey Glow on Main Living Level and Second Floor
- Trevino Style Cabinetry in Kitchen in River Rock Gray
- Perimeter Glass Cabinets to Ceiling in Kitchen
- Cabinet Panels on Kitchen Island
- Calacatta Flutter Quartz Countertops in Kitchen
- Kitchen Backsplash in Bourbon St Masonry 3"x 10"
- Trevino Style Cabinetry in Alpine White in Primary Bathroom
- Super White Quartz Countertops in Primary Bathroom
- Primary Bathroom Shower Wall and Bathroom Floor Tile in White Koshi 12"x 24"
- Primary Bathroom Wet Bed Tile in Silver Tweed
- Trevino Style Cabinetry in River Rock in Secondary Bathrooms
- Super White Quartz Countertops in Secondary Bathrooms
- Secondary Bathroom Shower Wall Tile in Cloud Gloss Watercolor 3"x12"
- Secondary Bathroom Floor Tile in White Koshi 12"x 24"
- First Floor Bathroom Tile Wet Bed in White & Gray US Ceramics Basketweave
- Park Satin Nickel Cabinet Hardware
- Stainless Plumbing, Bathroom, and Shower Door Finishes
- Satin Nickel Door Hardware
- Crown Molding on Main Living Level and Bedroom Level
- Trevino Style Cabinetry in Alpine White in Laundry
- Electric Car 220V Outlet in Garage
- ecobee Smart Thermostats
- Thermador Dishwasher and Microwave
- Bosch French Door Refrigerator with Thermador Handles

Specifications, materials, and availability of homes or communities are subject to change without notice or obligation. Please contact us to verify current information. They may differ from completed improvements and may change without notice.



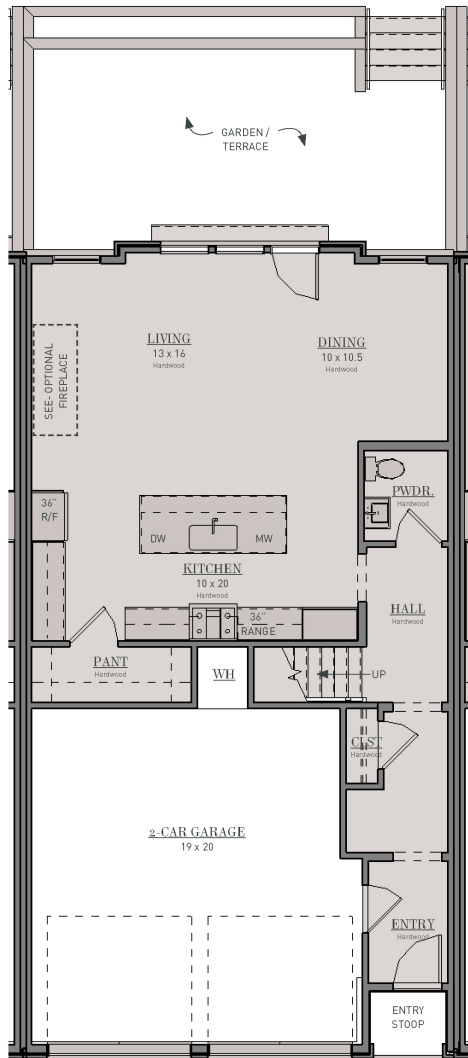


THE STEPHENS

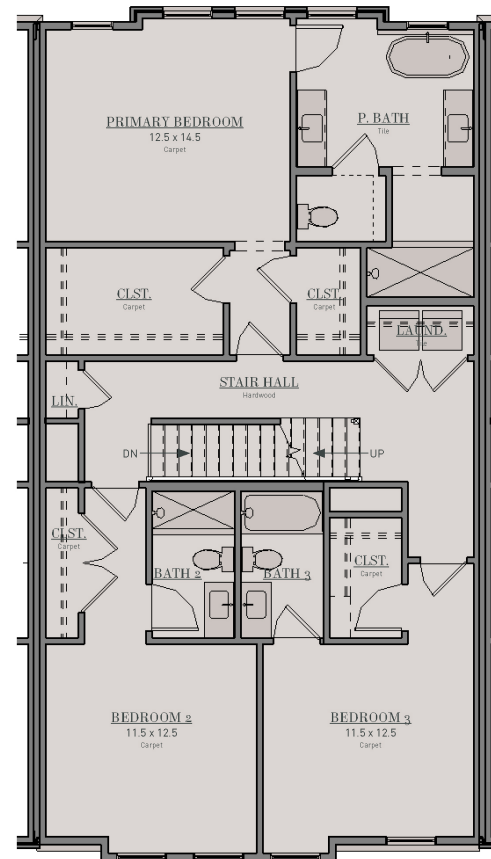
3 Bedrooms + 3.5 Bathrooms

2,790 square feet

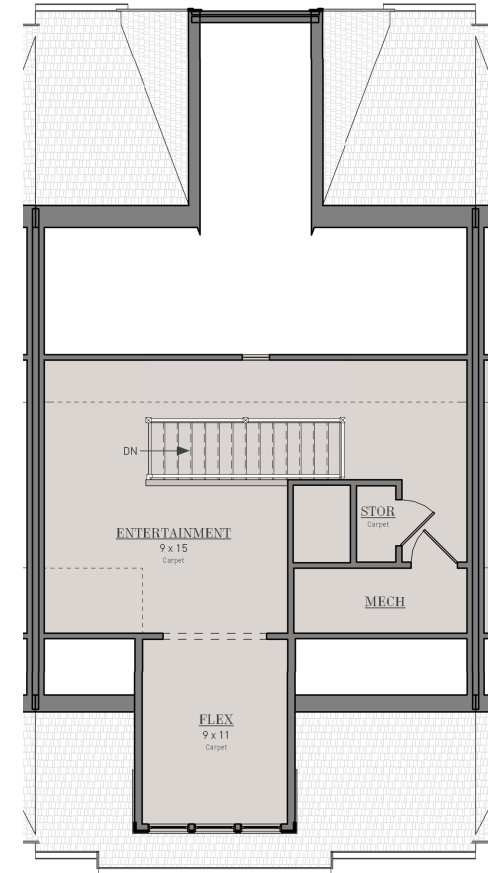
MAIN LEVEL



OPT. FIREPLACE



SECOND FLOOR



THIRD FLOOR

Figures reflecting size, square footage, and other dimensions are estimates; actual construction may vary. Size/square footage and price of your home may vary based on options selected. Floor plans may vary according to elevation. Prices, plans, dimensions, features, specifications, materials, and availability of homes or communities are subject to change without notice or obligation. Please contact us to verify current information. They may differ from completed improvements and may change without notice.