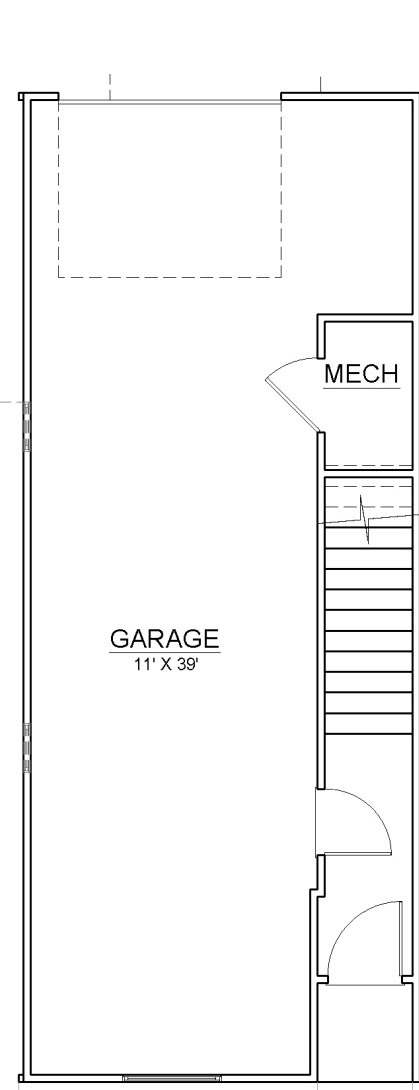


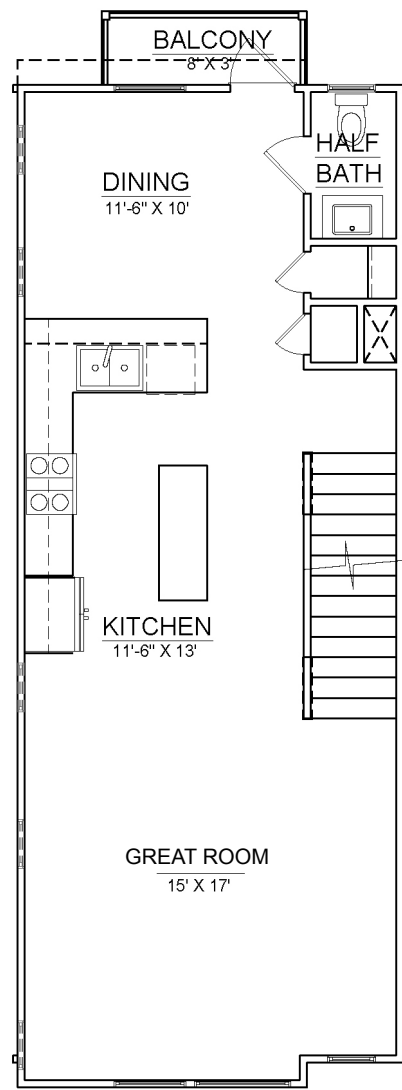
THE TREMONT - 1,350-1,727 SQ FT

2 bedroom/2.5 bathroom with optional rooftop terrace and bonus room

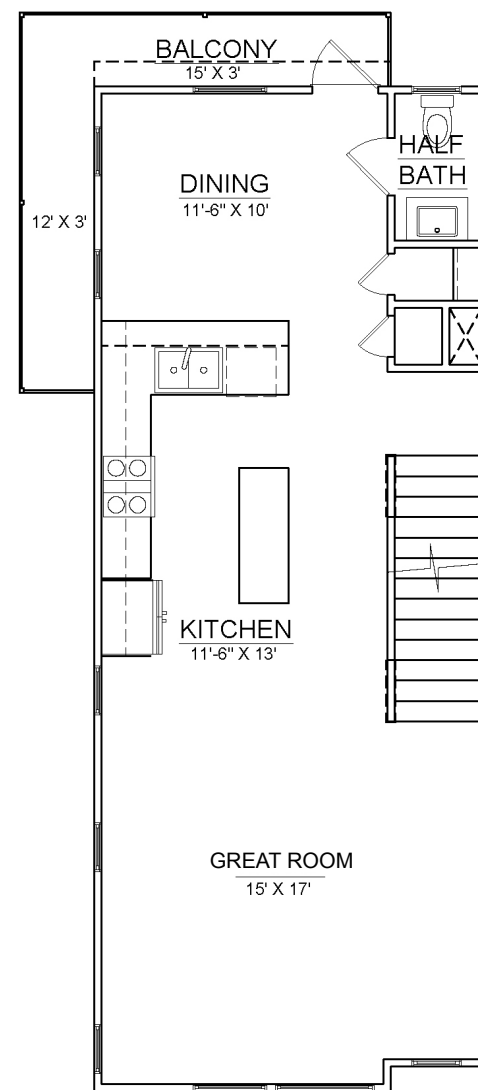
*side windows only on end units



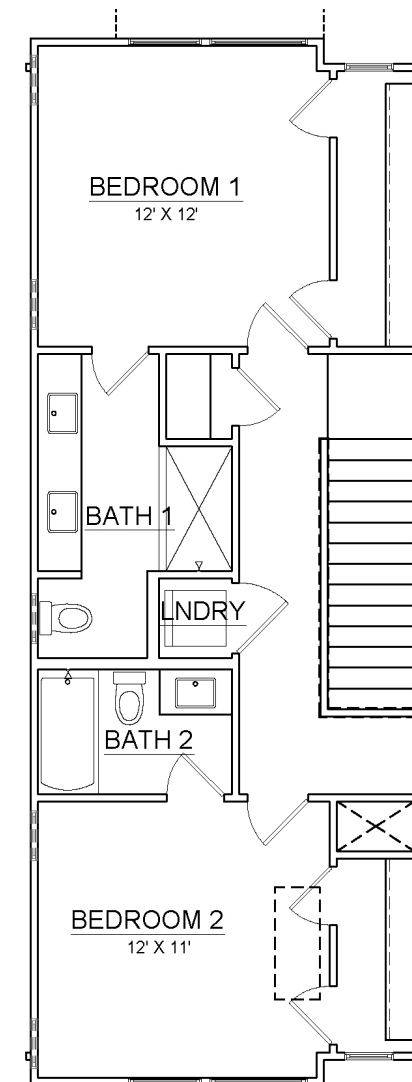
GROUND FLOOR



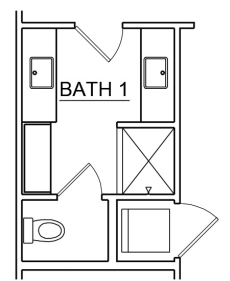
MAIN FLOOR



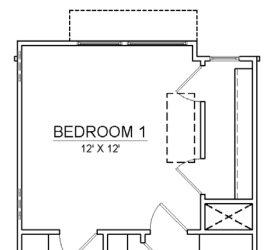
MAIN FLOOR WITH WRAP AROUND BALCONY (only on select units)



THIRD FLOOR



bathroom upgrade



*select homes have chase in bedroom 1 closet

*side windows only on end units
**garage location may vary by unit



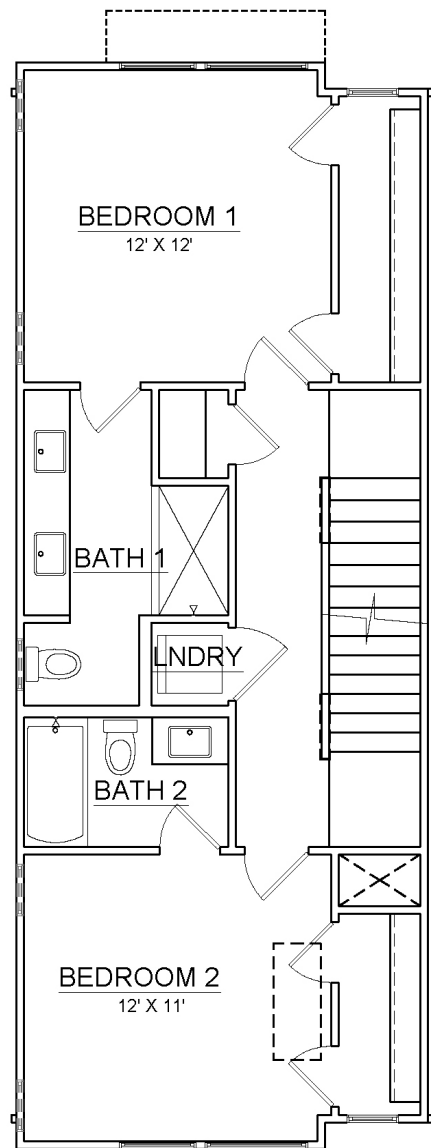
Figures reflecting size, square footage, and other dimensions are estimates: actual construction may vary. Size/square footage and price of your home may vary based on options selected. Floor plans may vary according to elevation. Prices, plans, dimensions, features, specifications, materials, and availability of homes or communities are subject to change without notice or obligation. Please contact us to verify current information. They may differ from completed improvements and may change without notice.



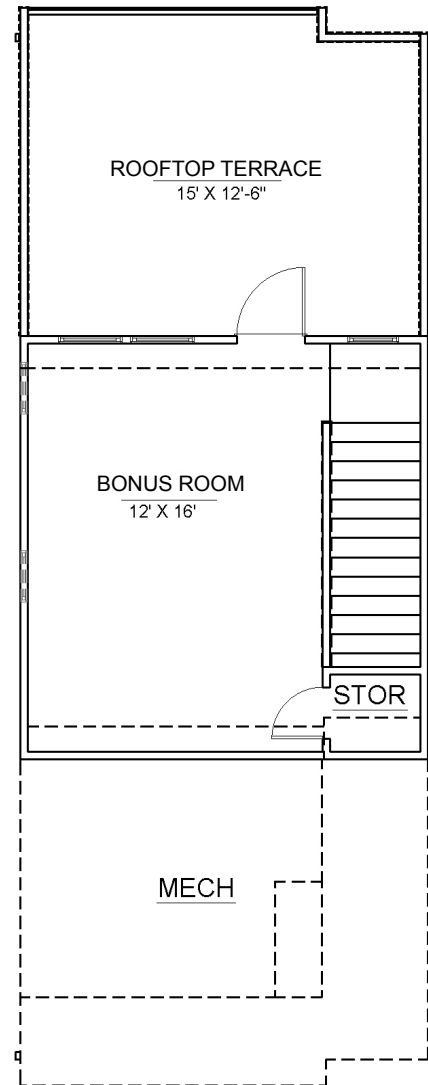
THE TREMONT - 1,350-1,727 SQ FT

2 bedroom/2.5 bathroom with optional rooftop terrace and bonus room

*side windows only on end units

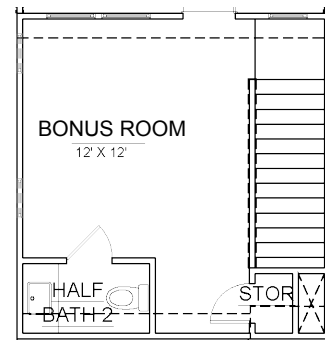


THIRD FLOOR WITH ROOFTOP OPTION

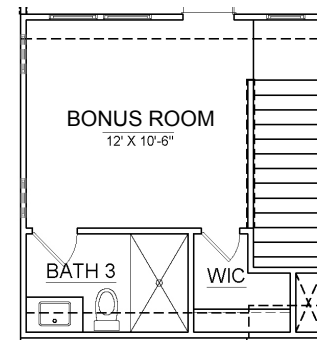


OPTIONAL BONUS ROOM & ROOFTOP TERRACE-A

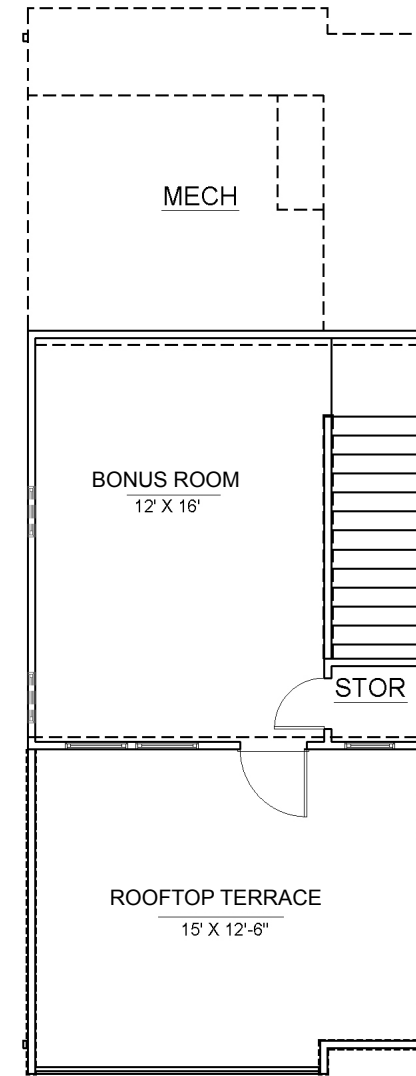
TREMONT A ROOFTOP OPTION



opt. bonus room with half bath

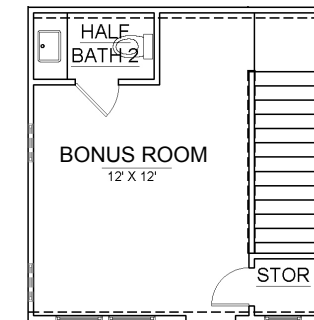


opt. bonus room with full bath

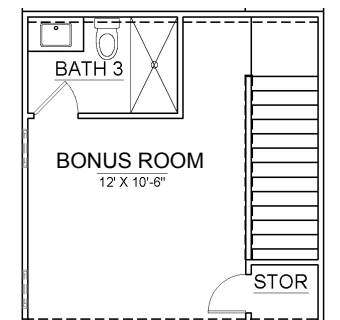


OPTIONAL BONUS ROOM & ROOFTOP TERRACE-B

TREMONT B ROOFTOP OPTION



opt. bonus room with half bath



opt. bonus room with full bath

*side windows only on end units



Figures reflecting size, square footage, and other dimensions are estimates: actual construction may vary. Size/square footage and price of your home may vary based on options selected. Floor plans may vary according to elevation. Prices, plans, dimensions, features, specifications, materials, and availability of homes or communities are subject to change without notice or obligation. Please contact us to verify current information. They may differ from completed improvements and may change without notice.

