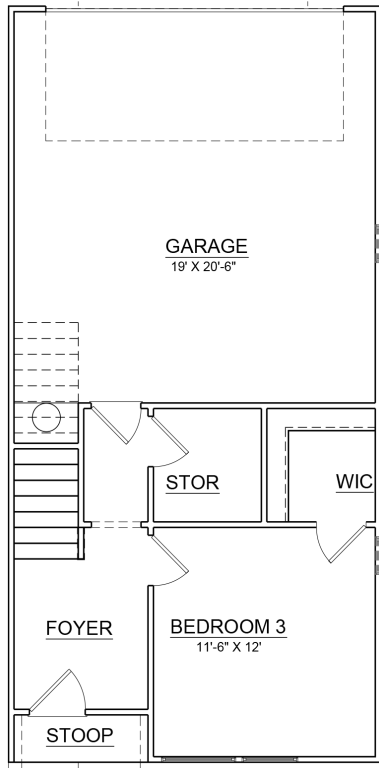
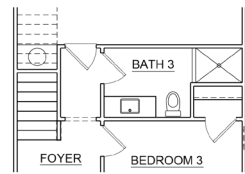


THE IRWIN

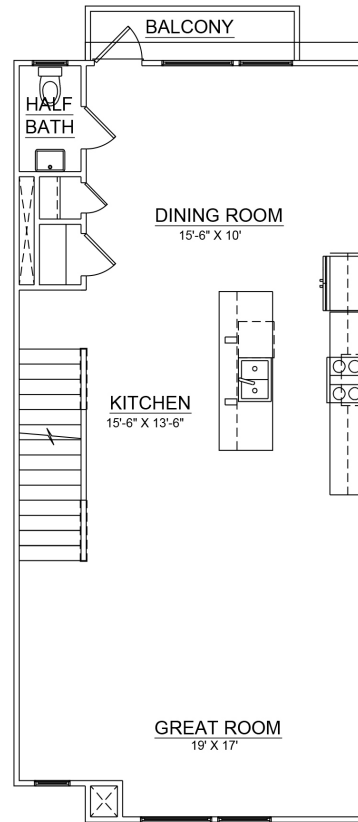
4 BEDROOMS/2.5-4.5 BATHROOMS
1,982 SQ FT-2,301 SQ FT



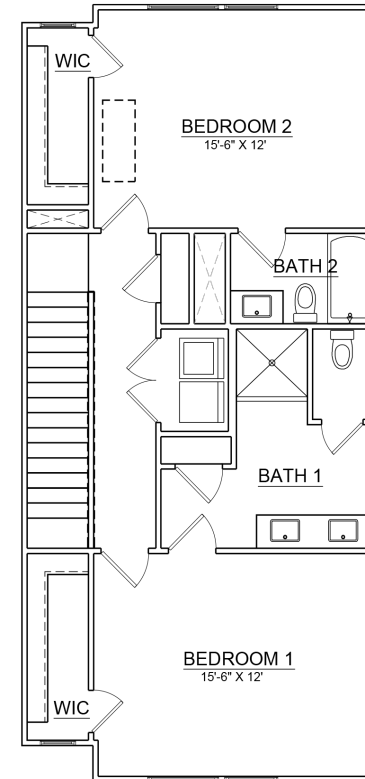
GROUND FLOOR



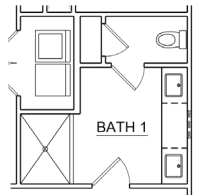
OPTIONAL BATHROOM



MAIN FLOOR



THIRD FLOOR



BATHROOM UPGRADE

*side windows only on end units
**garage location may vary based on location

