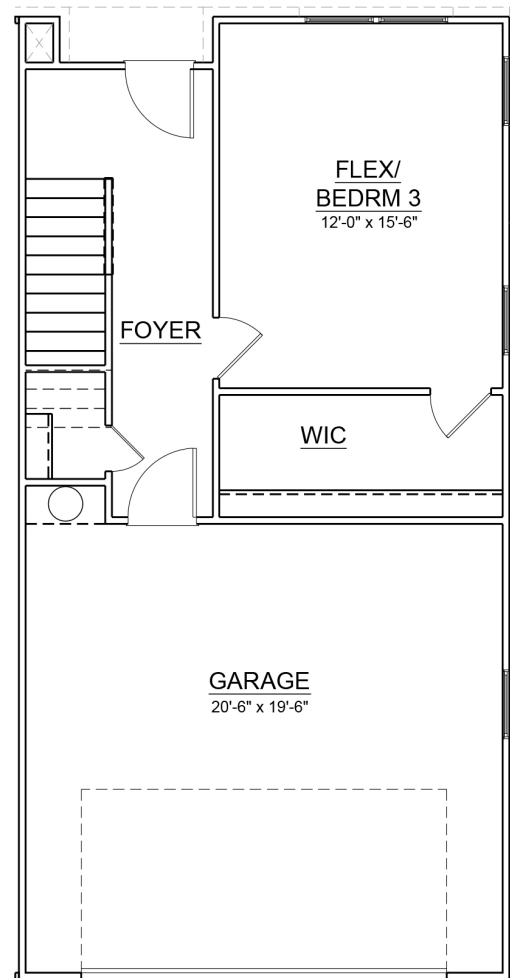
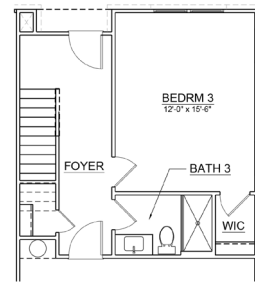


ELM FLOOR PLAN

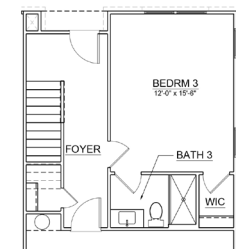
2,228-2,504 square feet / 3 bedrooms / 2.5-3.5 bathrooms



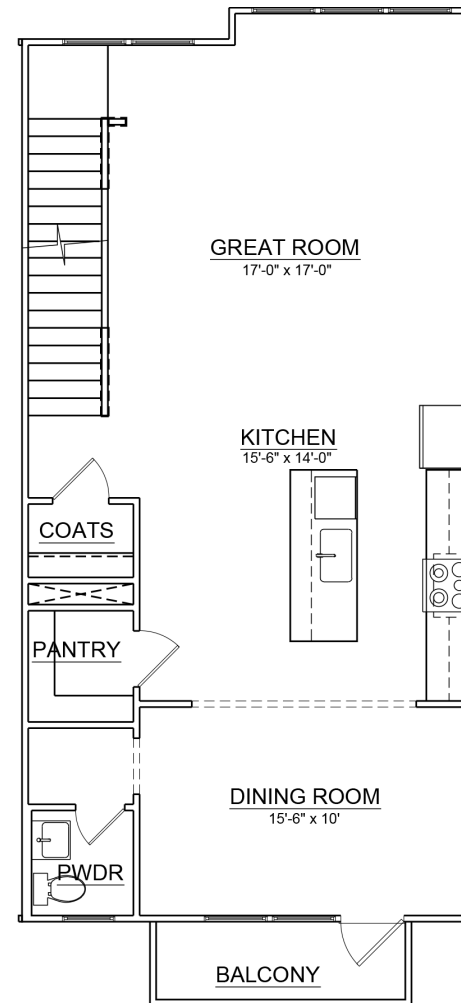
GROUND FLOOR



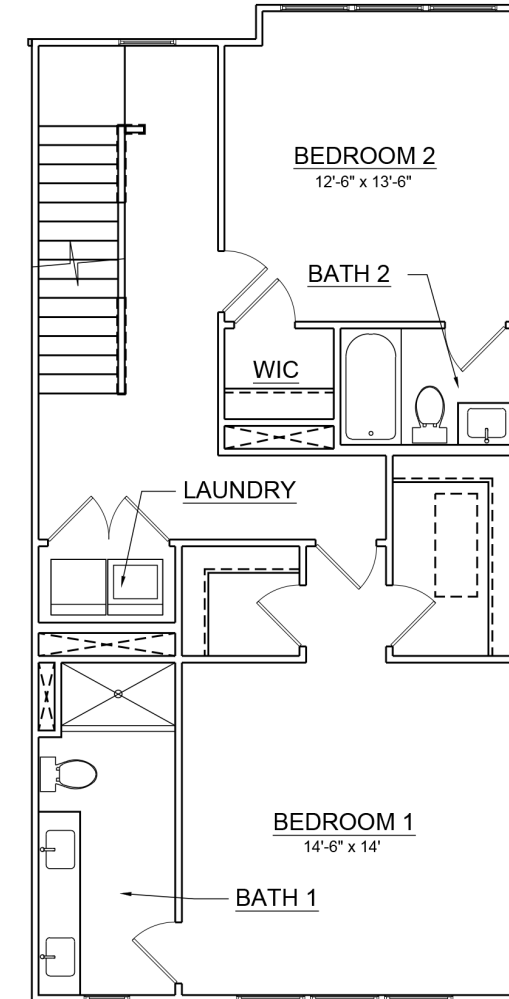
opt. bathroom



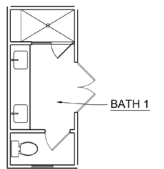
opt. private bedroom/bathroom



MAIN FLOOR



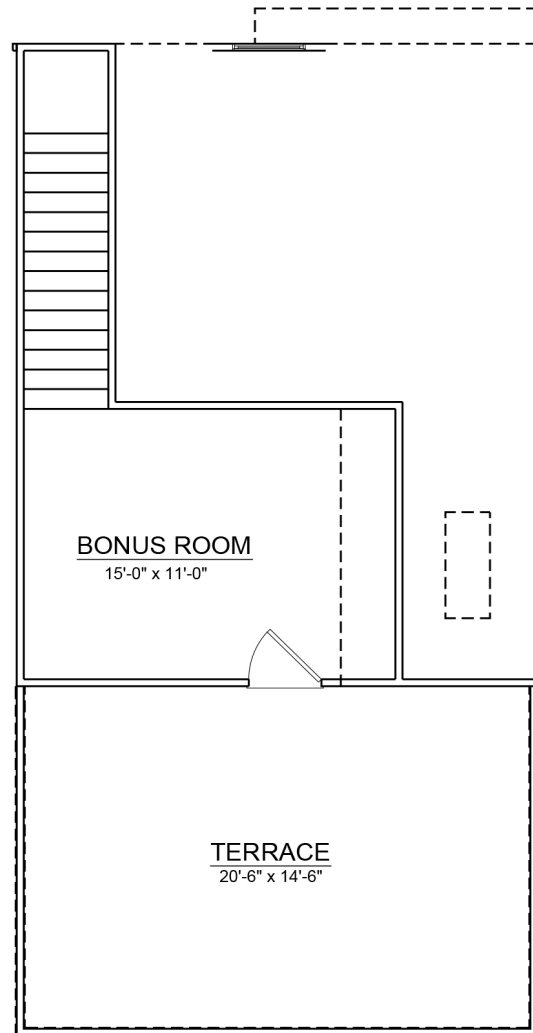
THIRD FLOOR



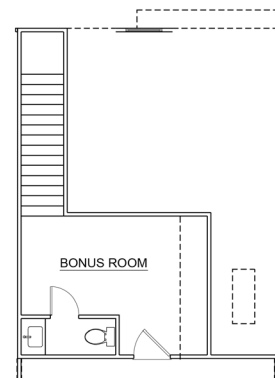
opt. luxury shower in master bath

ELM FLOOR PLAN

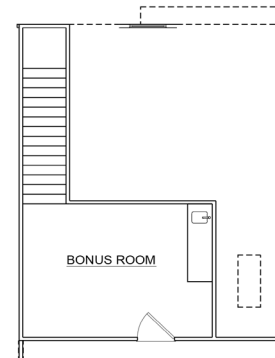
2,228-2,504 square feet / 3 bedrooms / 2.5-3.5 bathrooms



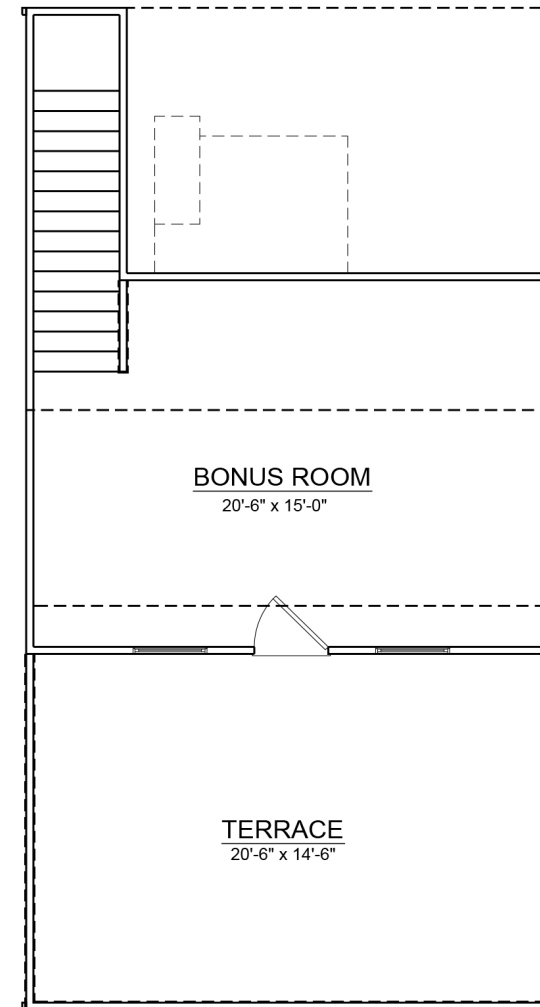
**INCLUDED
BONUS ROOM
& ROOFTOP TERRACE
ON END UNITS**



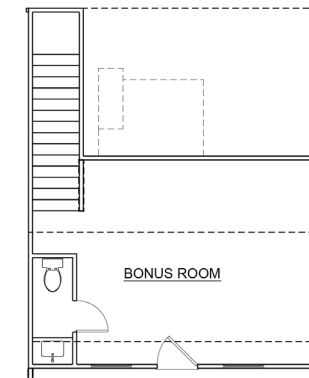
optional half
bath in bonus



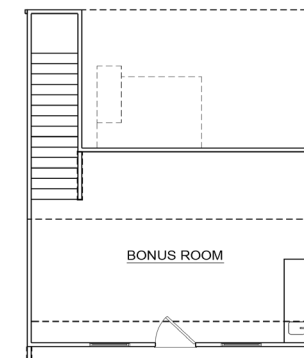
optional wet bar
in bonus



**OPTIONAL
BONUS ROOM
& ROOFTOP TERRACE
ON INTERIOR UNITS**



optional half
bath in bonus



optional wet bar
in bonus



Figures reflecting size, square footage, and other dimensions are estimates: actual construction may vary. Size/square footage and price of your home may vary based on options selected. Floor plans may vary according to elevation. Prices, plans, dimensions, features, specifications, materials, and availability of homes or communities are subject to change without notice or obligation. Please contact us to verify current information. They may differ from completed improvements and may change without notice.

